



OR-ING DIODE BLOCK SCREW TYPE

Model No.: P-OR-24-5-S3

Model No.: P-OR-24-10-S3

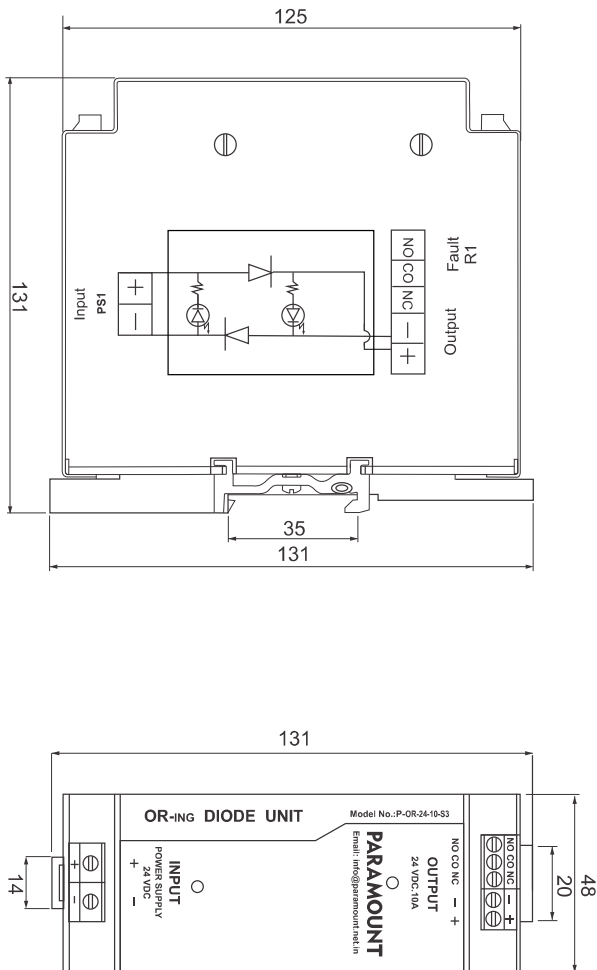
Model No.: P-OR-24-20-S3

General Information

The OR-ING unit combines two or more power sources to create redundant power source preserving the output power supply in case one of the input sources fails. In this situation of input power failure, the next power supply feeds the power quickly to prevent the system bus voltage from failing and bus collapse. The power supply failure signal is given by relay N/C contact

Dimensions

in mm.



Specifications

Input - 24VDC supply -1no's (standard)

Output current	Model No.	Current Rating	Voltage
	P-OR-24-5-S3	5 Amps	24VDC
	P-OR-24-10-S3	10 Amps	24VDC
	P-OR-24-20-S3	20 Amps	24VDC

Overload -10%max.

Drop -0.65 volts max DC at 5A,10A & 20A

Di-Electric strength -1KV AC
(between input / output to body)

Insulation resistance -100 mega Ohm @ 500 VDC min.
(between input / output to body)

Working Temperature -55°C Ambient max.

Indicators :

Input power supply -1 green LED for each power supply

Output power supply -1 green LED for output

output -1N/C Relay Contact
Rated 5A @ 24VDC & 5A @ 230VAC in case of failure of any one of the Input power supply

Conductor cross section -0.2-4.0²mm solid
0.2-2.5²mm solid
AWG 24-12

Dimension (LxBxH) in mm- 131 x 48 x 131

Mounting -35 mm DIN Rail

Weight -1.2 Kgs.

Custom built OR ing units can be designed and built to suit the special requirements.

Approvals