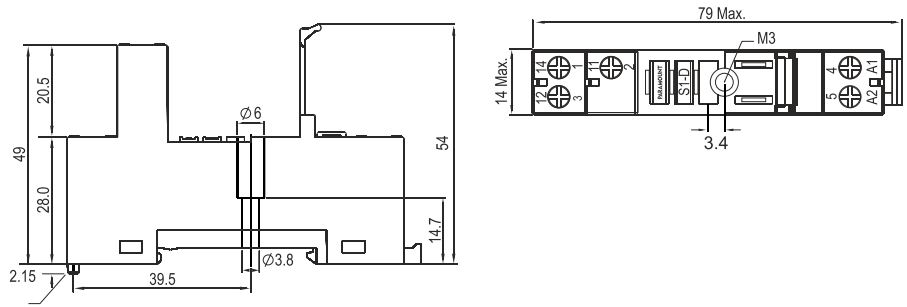


S1D is the World's most compact (14mm width) DIN Rail Mountable Socket for the relays with the below Pitch & Pin configuration



14mm width of the S1D DIN Rail Mountable Socket allows to mount 68 sockets on a Standard 35 mm Din Rail with a length of 1 meter / 1000 mm length (with a provision

Generally the PLC (Programmable Logic Controller) / DCS (Distributed Control System) output is 64 Bit output which requires 64 Relays to drive the load.

All the 64 Relays driven by a particular PLC / DCS can be mounted on a single 35 mm standard 1 Mt / 1000 mm Din Rail along with a provision to mount 4 Spare Relays.

The provision to mount 64 Relays on a single 35 mm Din Rail with 1 mt / 1000 length makes the wiring, identification of the relays from a particular PLC / DCS & maintenance very easy and convenient.

Mounting Tracks **All Dimensions in mm**

